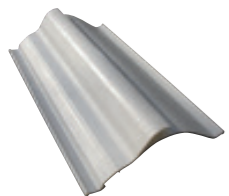


I separatori di gocce con pale in polipropilene sono stati studiati per soddisfare tutte le esigenze applicative nel campo del trattamento dell'aria. I telai possono essere realizzati in acciaio zincato, alluminio o acciaio inox. Grazie alla loro robustezza conferiscono alla struttura notevole rigidità.

*The polypropylene-blade droplet eliminators are specially designed to satisfy any usable needs in the air treatment field. Galvanized steel, aluminium or stainless steel are the material used for the frames. Thanks to their robust construction they give sturdiness to the whole structure.*

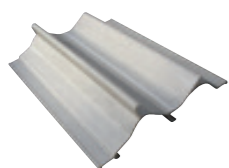


## SG33



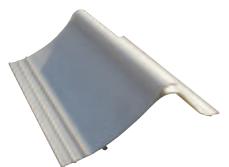
Con batterie di raffreddamento  
Passo 25 o 33 mm  
Velocità frontale 2-5 m/sec  
*With cooling coils*  
*Pitch 25 or 33 mm*  
*Face velocity 2-5 m/sec*

## SG20

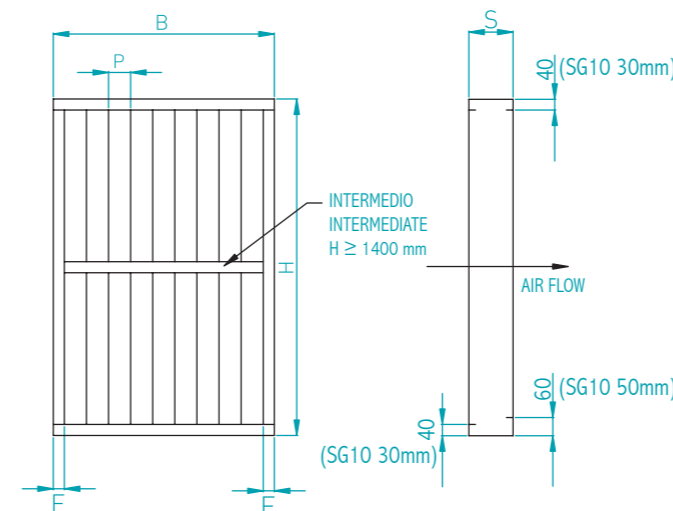
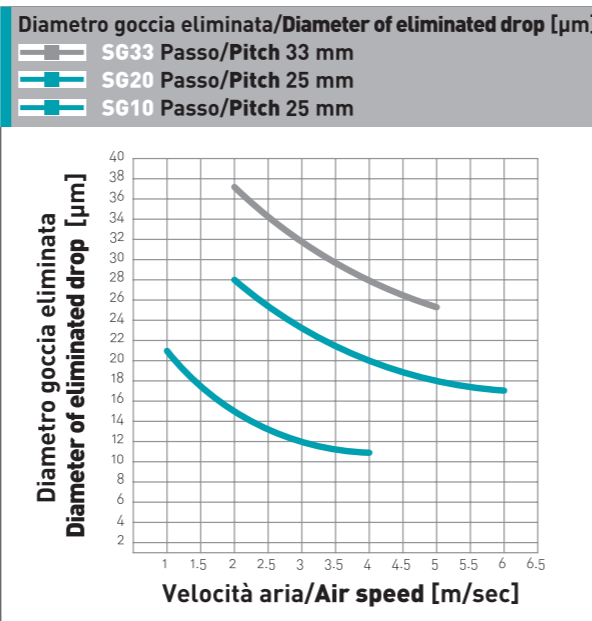
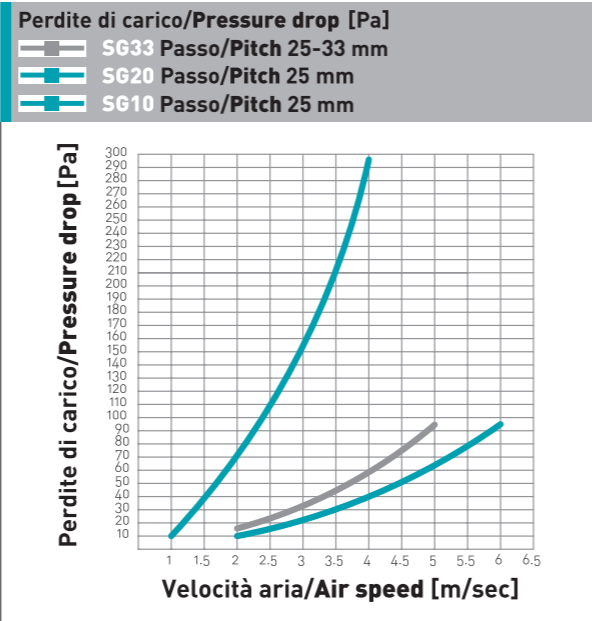


Lavaggi d'aria o grandi quantità d'acqua nell'aria  
Passo 25 mm  
Velocità frontale 1-4 m/sec  
*Air washing or big quantities of water in the air*  
*Pitch 25 mm*  
*Face velocity 1-4m/ sec*

## SG10



Raddrizzatori d'aria, riprese d'aria esterna  
Passo 25 mm  
Velocità frontale 2-6 m/sec  
*Air straightener, open air intakes*  
*Pitch 25 mm*  
*Face velocity 2-6 m/sec*



	S	P	F
SG10	190 mm	25 mm	30 mm
SG20	170 mm	25 mm	40 mm
SG33	120 mm	25-33 mm	40 mm

SERIE/CODE	SG10	SG10-05	SG20	SG20-03	SG20-05	SG33	SG33-02	SG33-03	SG33-04	SG33-06	SG33-05
PASSO PALE [mm]/ BLADES PITCH [mm]	25	25	25	25	25	25	33	25	33	25	33
PALA PSG10/ BLADE TYPE PSG10	X	X									
PALA PSG20/ BLADE TYPE PSG20			X	X	X						
PALA PSG33/ BLADE TYPE PSG33						X	X	X	X	X	X
TELAIO ACCIAIO ZINCATO/ GALVANIZED STEEL FRAME	X		X			X	X				
TELAIO ALLUMINIO (LAMIERA)/ ALUMINIUM SHEET FRAME				X				X	X		
TELAIO INOX AISI 304 AISI 316 A RICHIESTA/ STAINLESS STEEL FRAME AISI304 AISI 316 ON REQUEST		X			X					X	X
MATERIALE PALE/ BLADE MATERIAL	Polipropilene + talco / Polypropylene + talc										